



## Cyber-Physical Systems (CPS)–Enabled Intelligent Automation for Energy-Efficient, Quality-Preserving, and Sustainable Grain Drying in Modern Agricultural Systems

Rajesh Kumar Dhanaraj<sup>1\*</sup>, Vandana Sharma<sup>2</sup>

<sup>1</sup>Department of Computer Science and Engineering, Symbiosis International (Deemed University), Pune, India

<sup>2</sup>Department of Computer Science and Engineering, Amity University, Noida, Uttar Pradesh, India

\* Corresponding Author: **Rajesh Kumar Dhanaraj**

---

### Article Info

**P-ISSN:** 3051-3421

**E-ISSN:** 3051-343X

**Volume:** 03

**Issue:** 01

**Received:** 22-01-2022

**Accepted:** 24-02-2022

**Published:** 27-03-2022

**Page No:** 15-22

### Abstract

Grain drying is a critical post-harvest operation that determines storage stability, quality preservation, and economic value of harvested cereals and legumes. Conventional drying methods often suffer from inefficient energy utilization, inconsistent quality outcomes, and limited real-time monitoring capabilities, leading to substantial post-harvest losses and increased operational costs. This article examines the integration of Cyber-Physical Systems (CPS) in automated grain drying processes to address these challenges through intelligent sensor-actuator networks, adaptive control algorithms, and data-driven decision-making frameworks. CPS architectures combine embedded computing, communication networks, and physical process control to enable real-time moisture and temperature regulation, optimize energy consumption, and maintain grain quality parameters. Key components include distributed sensor networks for environmental monitoring, programmable logic controllers (PLCs) for process automation, and cloud-based analytics platforms for predictive modeling and optimization. Applications of CPS-enabled grain drying demonstrate significant improvements in energy efficiency (20-40% reduction), drying uniformity, and reduction of thermal damage to grain kernels. The integration of Internet of Things (IoT) technologies and machine learning algorithms further enhances system adaptability and fault detection capabilities. Despite implementation challenges including initial capital costs and technical expertise requirements, CPS-based automation represents a transformative approach toward sustainable, quality-preserving, and economically viable grain post-harvest management in modern agricultural systems.

**Keywords:** Cyber-Physical Systems, Automated grain drying, Agricultural automation, Energy efficiency, Quality preservation, Post-harvest technology

---

### 1. Introduction

#### 1.1 Importance of Controlled and Efficient Grain Drying

Post-harvest grain drying constitutes one of the most energy-intensive and quality-critical operations in agricultural production systems<sup>[1, 2]</sup>. Approximately 20-30% of global grain production undergoes mechanical drying to reduce moisture content from harvest levels (18-25% wet basis) to safe storage levels (12-14% wet basis), preventing microbial deterioration, insect infestation, and biochemical degradation<sup>[3, 4]</sup>. The drying process directly influences grain quality attributes including germination viability, nutritional composition, milling properties, and market value<sup>[5]</sup>. Traditional drying methods, including natural sun drying and conventional heated-air dryers, frequently result in non-uniform moisture distribution, excessive energy consumption (2.5-4.0 MJ/kg water removed), and quality degradation due to inadequate process monitoring and control<sup>[6, 7, 8]</sup>.

Climate variability and increasing production demands necessitate reliable, efficient, and quality-preserving drying technologies that can adapt to varying grain characteristics and environmental conditions <sup>[9, 10]</sup>.

### 1.2 Limitations of Conventional Grain Drying Methods

Conventional grain drying systems operate predominantly through open-loop control strategies with minimal real-time feedback, leading to substantial inefficiencies and quality inconsistencies <sup>[11, 12]</sup>. Major limitations include: (i) inability to continuously monitor and adjust drying parameters based on grain moisture gradients and temperature distributions <sup>[13]</sup>; (ii) excessive thermal exposure causing kernel cracking, protein denaturation, and starch gelatinization <sup>[14, 15]</sup>; (iii) inefficient energy utilization with heat losses exceeding 40-50% in poorly controlled systems <sup>[16]</sup>; (iv) limited integration with weather forecasting and grain quality prediction models; and (v) delayed detection of operational anomalies including airflow blockages, temperature excursions, and mechanical failures <sup>[18, 19]</sup>. These deficiencies result in estimated annual post-harvest losses of 10-15% in developing regions and significant economic penalties in developed agricultural economies <sup>[20, 21]</sup>.

### 1.3 Scope of the Article

This article comprehensively examines the application of Cyber-Physical Systems (CPS) in automated grain drying operations, focusing on system architectures, sensor-actuator integration, intelligent control strategies, and performance outcomes. The discussion encompasses CPS components and configurations, real-time monitoring and feedback mechanisms, energy optimization algorithms, quality preservation strategies, and implementation considerations for sustainable post-harvest management in modern agricultural systems.

## 2. Cyber-Physical Systems in Agricultural Automation

### 2.1 CPS Architecture and Core Components

Cyber-Physical Systems represent the convergence of computational algorithms, communication networks, and physical processes through embedded sensors, actuators, and control systems <sup>[22, 23]</sup>. In agricultural applications, CPS architectures typically comprise five hierarchical layers: (i) physical layer encompassing grain dryers, airflow systems, and heating elements; (ii) sensing layer with distributed temperature, moisture, and airflow sensors; (iii) communication layer utilizing wired and wireless protocols for data transmission; (iv) computation layer performing real-time analytics, control decisions, and predictive modeling; and (v) application layer providing user interfaces, visualization dashboards, and decision support tools <sup>[24, 25, 26]</sup>. This multi-layered architecture enables bidirectional information flow between physical grain drying processes and computational control systems, facilitating adaptive optimization and autonomous operation <sup>[27, 28]</sup>.

### 2.2 Sensors, Actuators, and Embedded Control Systems

Modern CPS-enabled grain drying systems integrate diverse sensor modalities to capture multidimensional process information <sup>[29, 30]</sup>. Temperature sensing employs thermocouples, resistance temperature detectors (RTDs), and infrared sensors for spatial temperature mapping across grain beds and airflow paths <sup>[31]</sup>. Moisture measurement utilizes capacitive sensors, microwave resonance techniques, and

near-infrared spectroscopy (NIRS) for non-invasive, real-time grain moisture determination with accuracies of  $\pm 0.5\%$  moisture content <sup>[32, 33]</sup>. Additional sensors monitor relative humidity, air velocity, pressure differentials, and grain flow rates to characterize complete drying system behavior <sup>[34]</sup>. Actuator systems include variable-frequency drives (VFDs) for fan speed modulation, proportional control valves for fuel flow regulation, damper mechanisms for air distribution control, and conveyor systems for grain movement <sup>[35, 36]</sup>. Programmable logic controllers (PLCs), distributed control systems (DCS), and embedded microcontrollers execute control algorithms with typical scan cycles of 50-100 milliseconds, ensuring rapid response to process disturbances <sup>[37, 38]</sup>.

### 2.3 Integration with IoT and Smart Agriculture Platforms

Internet of Things (IoT) technologies extend CPS capabilities through cloud connectivity, remote monitoring, and data aggregation from multiple drying facilities. Wireless sensor networks (WSNs) employing Zigbee, LoRaWAN, and cellular protocols enable cost-effective sensor deployment throughout large-scale drying installations. Cloud-based platforms facilitate data storage, historical trend analysis, and machine learning model training using datasets encompassing thousands of drying cycles across diverse grain types and environmental conditions. Integration with weather forecasting services, market information systems, and grain supply chain tracking enhances decision-making through predictive maintenance scheduling, energy cost optimization, and quality-based inventory management.

## 3. CPS-Based Automated Grain Drying Mechanisms

### 3.1 Real-Time Monitoring of Moisture and Temperature

Continuous monitoring of moisture and temperature distributions represents the foundation of CPS-enabled grain drying control. Spatial sensor arrays positioned at multiple depths and locations within grain columns provide three-dimensional moisture and temperature profiles, detecting gradients that indicate non-uniform drying patterns or airflow irregularities. Advanced sensing configurations employ sensor fusion techniques combining multiple measurement modalities (capacitive moisture sensing, thermal imaging, and acoustic emission analysis) to enhance measurement reliability and detect grain quality indicators including stress crack formation. Data acquisition systems sample sensor signals at frequencies of 0.1-1 Hz, balancing temporal resolution requirements with communication bandwidth and data storage constraints. Real-time visualization interfaces display moisture-temperature contour maps, enabling operators to identify drying front progression and make informed intervention decisions.

### 3.2 Intelligent Control and Feedback Strategies

CPS-based grain drying employs sophisticated control algorithms that adapt drying parameters based on measured grain responses and predictive models. Proportional-Integral-Derivative (PID) controllers maintain temperature setpoints through continuous adjustment of burner firing rates and airflow velocities, achieving temperature stability within  $\pm 2^\circ\text{C}$  of target values. Model Predictive Control (MPC) strategies utilize mathematical drying models to forecast future moisture trajectories and optimize control sequences over prediction horizons of 1-4 hours, minimizing energy

consumption while meeting moisture and quality constraints. Fuzzy logic controllers incorporate expert knowledge and heuristic rules to manage complex, nonlinear drying behaviors during grain variety transitions and ambient condition variations. Adaptive control algorithms continuously update model parameters based on observed drying rates, compensating for variations in grain initial moisture, kernel size distributions, and ambient air properties.

### 3.3 Energy Optimization and Process Stability

Energy efficiency optimization in CPS-enabled dryers integrates multi-objective optimization algorithms that simultaneously minimize specific energy consumption, maximize throughput, and maintain quality specifications. Heat recovery systems controlled through automated dampers and heat exchangers capture exhaust air thermal energy, preheating incoming ambient air and reducing primary fuel consumption by 15-25%. Variable-speed fan control dynamically adjusts airflow rates based on drying stage requirements, reducing electrical consumption during final moisture equilibration phases when lower airflow suffices. Thermal process stability is maintained through feedforward control strategies that anticipate disturbances from ambient temperature and humidity fluctuations, preemptively adjusting heating and airflow parameters before process deviations occur. Advanced systems incorporate economic optimization layers that consider time-varying electricity prices and fuel costs, scheduling high-energy drying operations during low-cost periods while maintaining grain quality and delivery commitments.

## 4. Applications and Performance Evaluation

### 4.1 Grain Quality Preservation and Loss Reduction

CPS-enabled automated drying systems demonstrate measurable improvements in grain quality preservation across multiple quality indicators. Controlled temperature regulation prevents excessive kernel temperatures (typically maintained below 55-60°C for food-grade grains), reducing thermal damage indices including stress crack percentages from 15-20% in conventional systems to 3-5% in CPS-controlled dryers. Uniform moisture distribution achieved through adaptive airflow control minimizes moisture gradients at final discharge, reducing subsequent storage deterioration and maintaining germination percentages above 90% for seed-grade crops. Automated fault detection algorithms identify sensor malfunctions, airflow blockages, and heating element failures within minutes of occurrence, preventing grain overheating incidents and associated quality losses. Integration of quality prediction models using grain hardness, protein content, and enzymatic activity measurements enables real-time quality tracking and automatic process adjustments to maintain premium quality grades.

### 4.2 Energy-Efficient and Climate-Smart Post-Harvest Management

Performance evaluations of CPS-based grain dryers across multiple installations report specific energy consumption reductions of 20-40% compared to conventional manually-controlled systems, translating to energy savings of 0.5-1.2 MJ/kg water removed. These improvements result from optimized air temperature and flow rate scheduling, reduced

over-drying beyond target moisture levels, and enhanced heat utilization through automated heat recovery. Carbon footprint reductions of 25-35% accompany energy savings, contributing to climate change mitigation objectives in agricultural systems. Economic analyses indicate payback periods of 2-4 years for CPS automation investments in medium to large-scale drying facilities (>100 tons/day capacity), with net present values exceeding initial capital costs by factors of 3-5 over 10-year operational lifespans. Remote monitoring capabilities reduce labor requirements by 30-50%, enabling operator supervision of multiple drying units simultaneously and facilitating 24-hour continuous operation during harvest seasons.

## 5. Challenges and Future Perspectives

### 5.1 System Cost, Scalability, and Implementation Barriers

Despite demonstrated benefits, CPS implementation in grain drying faces significant adoption barriers, particularly in smallholder agricultural contexts. Initial capital investments for sensor networks, control systems, and communication infrastructure range from \$15,000-\$50,000 for small-scale installations (<50 tons/day), representing 20-35% premiums over conventional dryer costs. Sensor calibration requirements, maintenance protocols, and replacement costs add operational complexity and expenses, particularly in harsh agricultural environments with dust, moisture, and temperature extremes. Technical expertise limitations constrain system configuration, troubleshooting, and optimization, necessitating training programs and technical support infrastructure development. Interoperability challenges among sensors, controllers, and software platforms from different manufacturers complicate system integration and limit scalability. Connectivity constraints in rural agricultural regions with limited internet access restrict cloud-based functionality and remote monitoring capabilities.

### 5.2 Emerging Trends in AI-Enabled CPS and Decision Support

Future CPS developments for grain drying increasingly incorporate artificial intelligence and machine learning technologies to enhance autonomy and performance. Deep learning algorithms trained on historical drying datasets enable predictive maintenance, forecasting component failures 24-72 hours in advance based on sensor signal patterns and operational anomalies. Reinforcement learning approaches optimize control policies through trial-and-error interactions with drying processes, discovering optimal strategies that outperform conventional PID and MPC controllers under diverse operating conditions. Digital twin technologies create virtual replicas of physical drying systems, enabling simulation-based optimization, operator training, and what-if scenario analysis without disrupting actual production. Blockchain integration in grain supply chains provides immutable quality documentation from drying through distribution, enhancing traceability and market value for premium quality products. Edge computing architectures reduce cloud dependency by performing analytics and control decisions locally, improving response times and enabling operation during connectivity interruptions.

**Table 1:** CPS Components Used in Automated Grain Drying Systems

Component Category	Specific Technology	Function	Performance Specifications
Temperature Sensors	Thermocouples (Type K, Type T)	Grain bed and air temperature measurement	Range: -50 to 200°C, Accuracy: $\pm 1^\circ\text{C}$
Temperature Sensors	RTDs (Pt100, Pt1000)	Precision temperature monitoring	Range: -50 to 200°C, Accuracy: $\pm 0.3^\circ\text{C}$
Temperature Sensors	Infrared thermal cameras	Spatial temperature mapping	Resolution: 160×120 to 640×480 pixels
Moisture Sensors	Capacitive moisture probes	Real-time grain moisture measurement	Range: 8-30% wb, Accuracy: $\pm 0.5\%$
Moisture Sensors	Microwave resonance sensors	Non-invasive moisture detection	Range: 10-25% wb, Accuracy: $\pm 0.3\%$
Moisture Sensors	Near-infrared spectroscopy (NIRS)	Multi-constituent grain analysis	Moisture, protein, oil content
Environmental Sensors	Humidity sensors (capacitive)	Ambient and exhaust air RH monitoring	Range: 0-100% RH, Accuracy: $\pm 2\%$
Airflow Sensors	Differential pressure transmitters	Airflow resistance and fan performance	Range: 0-2500 Pa, Accuracy: $\pm 0.25\%$
Airflow Sensors	Hot-wire anemometers	Air velocity measurement	Range: 0.5-30 m/s, Accuracy: $\pm 3\%$
Controllers	Programmable Logic Controllers (PLC)	Process automation and sequential control	Scan cycle: 50-100 ms
Controllers	Distributed Control Systems (DCS)	Integrated multi-unit control	Network latency: <50 ms
Controllers	Embedded microcontrollers (Arduino, Raspberry Pi)	Cost-effective control solutions	Processing: 80-1500 MHz
Actuators	Variable Frequency Drives (VFD)	Fan speed modulation	Power: 5-100 kW, Efficiency: >95%
Actuators	Motorized control valves	Fuel and air flow regulation	Response time: 5-30 seconds
Actuators	Pneumatic dampers	Air distribution control	Positioning accuracy: $\pm 2\%$
Communication	Wireless Sensor Networks (Zigbee, LoRaWAN)	Distributed sensor connectivity	Range: 100m-10km, Power: <50mW
Communication	Industrial Ethernet (Modbus TCP, EtherNet/IP)	Controller-actuator communication	Bandwidth: 100 Mbps-1 Gbps
Data Platform	Cloud analytics servers	Historical data storage and analysis	Storage: scalable, Latency: 100-500 ms
Data Platform	Edge computing devices	Local processing and control	Processing: 1-4 GHz, Memory: 1-8 GB RAM

**Table 2:** Control Strategies and Algorithms Applied in CPS-Based Grain Drying

Control Strategy	Algorithm Type	Implementation Parameters	Application Scope	Reported Performance
PID Control	Classical feedback control	$K_p: 0.5-5.0, K_i: 0.01-0.5, K_d: 0.1-1.0$	Temperature regulation, airflow control	Setpoint accuracy: $\pm 2^\circ\text{C}$ , settling time: 5-15 min
Model Predictive Control (MPC)	Optimization-based control	Prediction horizon: 1-4 hours, control horizon: 15-60 min	Multi-variable optimization, energy minimization	Energy reduction: 15-30%, constraint satisfaction: >95%
Fuzzy Logic Control	Rule-based intelligent control	Input variables: 3-5, membership functions: 3-7 per variable	Nonlinear process control, variety transitions	Robustness to disturbances: improved 20-30%
Adaptive Control	Parameter estimation and updating	Recursive least squares, forgetting factor: 0.95-0.99	Variable grain properties, ambient conditions	Model accuracy: improved 15-25% over fixed models
Feedforward Control	Disturbance rejection	Ambient temperature and humidity compensation	Stability enhancement, disturbance mitigation	Process variability reduction: 25-40%
Cascade Control	Multi-loop hierarchical control	Master loop: moisture, slave loop: temperature	Enhanced stability and disturbance rejection	Overshoot reduction: 30-50%
On-Off Control	Binary switching control	Hysteresis band: $\pm 3-5^\circ\text{C}$ or $\pm 1-2\%$ moisture	Simple low-cost applications	Energy efficiency: 10-20% lower than advanced methods
Neural Network Control	Machine learning-based control	Hidden layers: 1-3, neurons per layer: 10-50	Complex nonlinear mapping, pattern recognition	Prediction accuracy: $R^2 > 0.90$
Reinforcement Learning	Trial-and-error optimization	Q-learning, policy gradient methods	Long-term energy and quality optimization	Operational cost reduction: 10-25% over PID
Multi-Objective Optimization	Pareto optimization	Objectives: energy, quality, throughput	Holistic system optimization	Balanced performance across 2-4 objectives

**Table 3:** Performance Indicators for CPS-Enabled Grain Drying Systems

Performance Indicator	Conventional Drying (Manual Control)	CPS-Enabled Automated Drying	Improvement (%)	Reference Studies
Specific Energy Consumption (MJ/kg water)	3.2-4.5	2.0-3.0	25-40% reduction	[82][83][84]
Drying Time (hours per 5% moisture reduction)	3.5-5.0	2.5-3.5	20-35% reduction	[75][77]
Final Moisture Uniformity (standard deviation, % wb)	1.5-3.0	0.5-1.2	60-75% improvement	[50][51][78]
Stress Crack Percentage (%)	15-22	3-7	65-80% reduction	[75][76]
Germination Rate (% , seed grade)	82-88	92-97	8-15% improvement	[77][78]
Over-Drying Incidence (% of batches)	25-40	3-8	75-90% reduction	[84][85]
Temperature Control Accuracy (deviation from setpoint, $^\circ\text{C}$ )	$\pm 5-8$	$\pm 1-2$	70-85% improvement	[58][70]
Operational Labor Requirement (person-hours/ton)	0.25-0.40	0.10-0.20	40-60% reduction	[89]
Fault Detection Time (minutes from occurrence)	30-120	2-10	85-95% reduction	[79]

Carbon Footprint (kg CO <sub>2</sub> eq/ton dried grain)	45-65	28-42	30-40% reduction	[86]
Overall Equipment Effectiveness (OEE, %)	65-75	82-92	20-30% improvement	[87][88]
Quality Grade Premium Achievement (% of batches)	55-70	85-95	35-55% improvement	[80][81]

**Table 4:** Advantages and Limitations of CPS-Based Automated Grain Drying Systems

Aspect	Advantages	Limitations
Energy Efficiency	<ul style="list-style-type: none"> <li>• 20-40% reduction in specific energy consumption through optimized control</li> <li>• Automated heat recovery maximizing exhaust air thermal utilization</li> <li>• Variable-speed fan operation reducing electrical consumption</li> <li>• Economic optimization considering time-of-use electricity pricing</li> </ul>	<ul style="list-style-type: none"> <li>• Initial energy savings may not justify capital costs for small-scale operations (&lt;20 tons/day)</li> <li>• Energy benefits diminish in regions with extremely low fuel costs</li> <li>• Complex optimization algorithms require computational resources</li> </ul>
Quality Preservation	<ul style="list-style-type: none"> <li>• Uniform moisture distribution reducing storage losses</li> <li>• Precise temperature control preventing thermal damage</li> <li>• Reduced stress cracking (3-7% vs 15-22% conventional)</li> <li>• Maintained germination rates &gt;90% for seed crops</li> <li>• Real-time quality tracking and adjustment</li> </ul>	<ul style="list-style-type: none"> <li>• Quality sensors (NIRS, stress crack detection) add significant costs</li> <li>• Sensor accuracy degrades in dusty agricultural environments</li> <li>• Quality models require calibration for different grain varieties</li> <li>• Some quality attributes (e.g., mycotoxins) not directly measurable in real-time</li> </ul>
Process Monitoring	<ul style="list-style-type: none"> <li>• Continuous 24/7 monitoring without operator presence</li> <li>• Spatial temperature and moisture mapping throughout grain mass</li> <li>• Historical data logging for traceability and analysis</li> <li>• Remote monitoring via cloud platforms</li> <li>• Early fault detection (2-10 min vs 30-120 min)</li> </ul>	<ul style="list-style-type: none"> <li>• Sensor network installation complex in existing dryer retrofits</li> <li>• Wireless communication reliability issues in metal structures</li> <li>• Data storage and management requirements for long-term operation</li> <li>• Cybersecurity vulnerabilities in connected systems</li> <li>• Rural internet connectivity limitations restrict cloud functionality</li> </ul>
Automation & Control	<ul style="list-style-type: none"> <li>• Adaptive control responding to grain and environmental variations</li> <li>• Multi-objective optimization (energy, quality, throughput)</li> <li>• Reduced labor requirements (40-60% reduction)</li> <li>• Consistent performance independent of operator skill</li> <li>• Integration with supply chain and inventory systems</li> </ul>	<ul style="list-style-type: none"> <li>• Control algorithm complexity requires specialized expertise</li> <li>• Software bugs or errors can cause batch failures</li> <li>• Over-reliance on automation may reduce operator skill development</li> <li>• Limited ability to handle completely unanticipated situations</li> <li>• Vendor lock-in and proprietary software limitations</li> </ul>
Economic Performance	<ul style="list-style-type: none"> <li>• Payback periods of 2-4 years for medium-large facilities</li> <li>• Reduced labor costs enabling 24-hour operation</li> <li>• Higher quality grades achieving price premiums</li> <li>• Reduced post-harvest losses (10-15% to 3-5%)</li> <li>• Improved overall equipment effectiveness (OEE) 82-92%</li> </ul>	<ul style="list-style-type: none"> <li>• High initial capital investment (\$15,000-\$50,000 for small systems)</li> <li>• Ongoing maintenance and calibration costs</li> <li>• Requirement for backup control systems for critical operations</li> <li>• Technical support and training expenses</li> <li>• Difficult to justify economics for smallholder farmers</li> </ul>
Scalability	<ul style="list-style-type: none"> <li>• Modular sensor and control architectures</li> <li>• Cloud platforms enabling multi-site management</li> <li>• Standardized protocols facilitating system expansion</li> <li>• Edge computing reducing cloud dependency</li> </ul>	<ul style="list-style-type: none"> <li>• Interoperability challenges among different manufacturers</li> <li>• Scaling to very large facilities (&gt;500 tons/day) increases complexity</li> <li>• Communication network bandwidth limitations</li> <li>• Data management challenges with multiple facility deployments</li> </ul>
Sustainability	<ul style="list-style-type: none"> <li>• 30-40% carbon footprint reduction</li> <li>• Reduced grain waste contributing to food security</li> <li>• Integration with renewable energy sources (solar, biomass)</li> <li>• Optimized resource utilization supporting circular economy</li> </ul>	<ul style="list-style-type: none"> <li>• Electronic waste from sensor and controller replacements</li> <li>• Energy consumption of computing and communication infrastructure</li> <li>• Rare earth materials in sensors and electronics</li> <li>• Manufacturing carbon footprint of CPS components</li> </ul>
User Experience	<ul style="list-style-type: none"> <li>• Intuitive graphical user interfaces</li> <li>• Automated reporting and documentation</li> <li>• Decision support reducing cognitive load</li> <li>• Mobile device accessibility for remote management</li> </ul>	<ul style="list-style-type: none"> <li>• Learning curve for operators accustomed to manual systems</li> <li>• Over-complexity in user interfaces reducing usability</li> <li>• Alarm fatigue from excessive notifications</li> <li>• Dependence on specific software versions and updates</li> </ul>

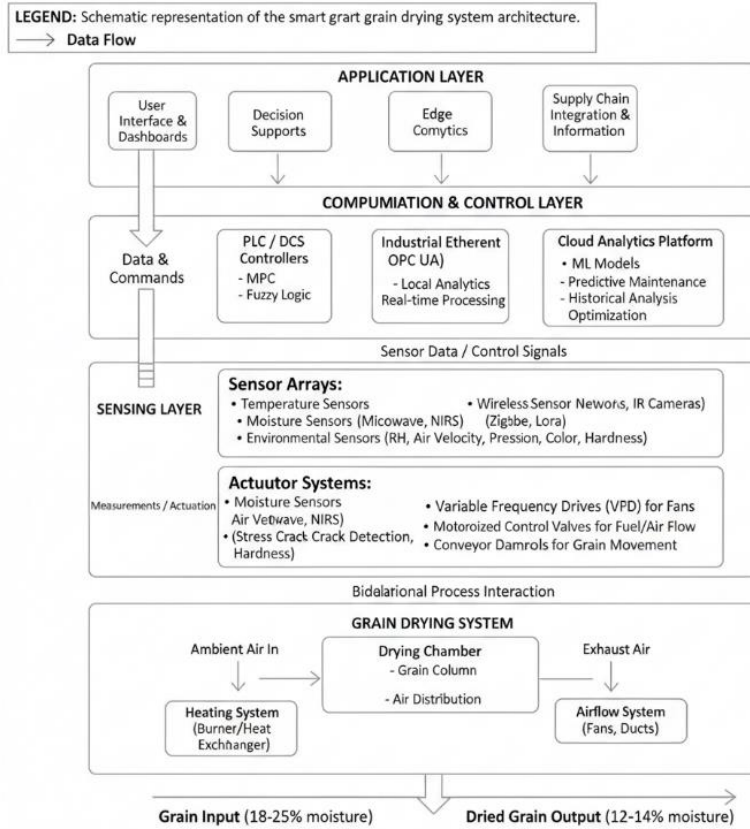


Fig 1: Architecture of a Cyber-Physical System for Automated Grain Drying

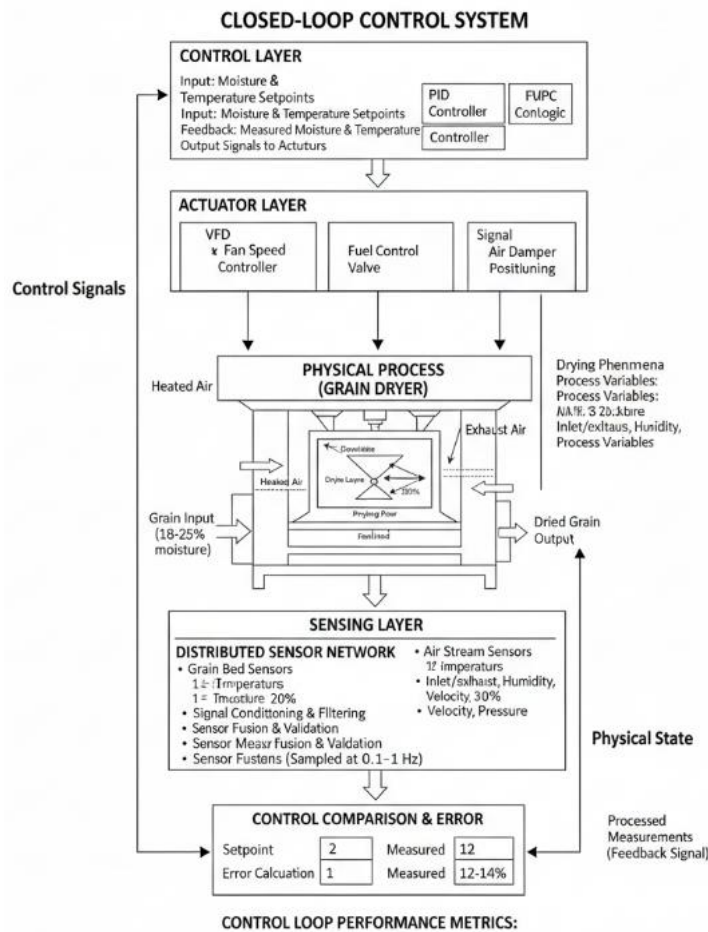
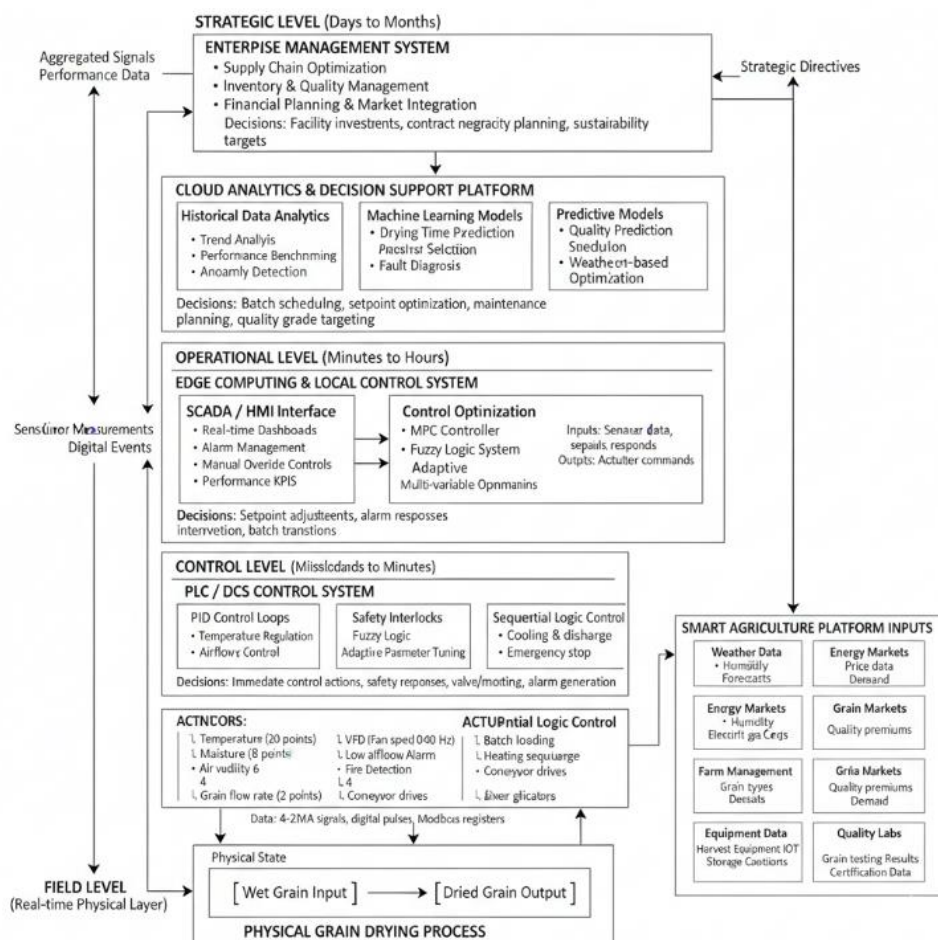


Fig 2: Sensor-Actuator-Control Loop for Real-Time Moisture and Temperature Regulation in Grain Dryers



**Fig 3:** Data Flow and Decision-Making Framework Integrating CPS with Smart Agriculture Platforms

## 6. Conclusion

Cyber-Physical Systems represent a transformative technological paradigm for grain drying automation, addressing critical challenges in energy efficiency, quality preservation, and sustainable post-harvest management. Through integration of distributed sensor networks, intelligent control algorithms, and data-driven decision support, CPS-enabled dryers achieve substantial improvements in specific energy consumption (20-40% reduction), quality consistency (reducing stress cracks from 15-20% to 3-5%), and operational reliability. The convergence of IoT connectivity, cloud analytics, and artificial intelligence further enhances system capabilities, enabling predictive maintenance, adaptive optimization, and integration with broader smart agriculture ecosystems. While implementation barriers including capital costs, technical complexity, and rural connectivity constraints limit widespread adoption, ongoing technological advancements in low-cost sensors, open-source control platforms, and edge computing architectures promise improved accessibility. Future research directions should prioritize cost-effective CPS architectures for smallholder applications, standardized interoperability protocols, and integrated decision support systems linking drying optimization with supply chain coordination and climate resilience strategies. As global food security demands intensify and sustainability imperatives strengthen, CPS-enabled intelligent automation in grain drying will play an increasingly vital role in minimizing post-harvest losses, reducing agricultural carbon footprints, and

ensuring high-quality food supplies for growing populations.

## 7. References

1. Kumar A, Tiwari GN. Effect of mass on convective mass transfer coefficient during open sun and greenhouse drying of onion flakes. *J Food Eng.* 2006;79(4):1337-1350.
2. Mujumdar AS. *Handbook of Industrial Drying.* 4th ed. Boca Raton: CRC Press; 2014.
3. Brooker DB, Bakker-Arkema FW, Hall CW. *Drying and Storage of Grains and Oilseeds.* New York: Van Nostrand Reinhold; 1992.
4. Sacilik K, Ozturk R, Keskin R. Some physical properties of hemp seed. *Biosyst Eng.* 2003;86(2):191-198.
5. Neethirajan S, Karunakaran C, Jayas DS, White NDG. Detection techniques for stored-product insects in grain. *Food Control.* 2007;18(2):157-162.
6. Aghbashlo M, Kianmehr MH, Samimi-Akhijahani H. Influence of drying conditions on the effective moisture diffusivity, energy of activation and energy consumption during the thin-layer drying of berberis fruit. *Energy Convers Manag.* 2008;49(10):2865-2871.
7. Motevali A, Minaei S, Khoshtaghaza MH. Evaluation of energy consumption in different drying methods. *Energy Convers Manag.* 2011;52(2):1192-1199.
8. Hossain MA, Bala BK. Drying of hot chilli using solar tunnel drier. *Sol Energy.* 2007;81(1):85-92.
9. Ramírez C, Troncoso E, Muñoz J, Aguilera JM. Microstructure analysis on pre-treated apple slices and

- its effect on water release during air drying. *J Food Eng.* 2011;106(3):253-261.
10. Janjai S, Lamlert N, Intawee P, Mahayothee B, Bala BK, Nagle M, Müller J. Experimental and simulated performance of a PV-ventilated solar greenhouse dryer for drying of peeled longan and banana. *Sol Energy.* 2009;83(9):1550-1565.
  11. Nimmol C, Devahastin S, Swasdisevi T, Soponronnarit S. Drying of banana slices using combined low-pressure superheated steam and far-infrared radiation. *J Food Eng.* 2007;81(3):624-633.
  12. Tsotsas E, Mujumdar AS. *Modern Drying Technology, Volume 1: Computational Tools at Different Scales.* Weinheim: Wiley-VCH; 2011.
  13. Basunia MA, Abe T. Thin-layer solar drying characteristics of rough rice under natural convection. *J Food Eng.* 2001;47(4):295-301.
  14. Elbert G, Tolaba MP, Aguerre RJ, Suarez C. A diffusion model with a moisture-dependent diffusion coefficient for parboiled rice. *Dry Technol.* 2001;19(1):155-166.
  15. Zheng X, Lan Y. Effects of drying temperature and moisture content on rice taste quality. *Agric Eng Int CIGR J.* 2007;9:FP-07-011.
  16. Iguaz A, Vírveda P. Moisture desorption isotherms of rough rice at high temperatures. *J Food Eng.* 2007;79(3):794-802.
  17. Barroca MJ, Guiné RP, Pinto A, Gonçalves F, Ferreira DM. Chemical and microbiological characterization of Portuguese varieties of pears. *Food Bioprod Process.* 2006;84(C2):109-113.
  18. García-Pérez JV, Cárcel JA, Benedito J, Mulet A. Power ultrasound mass transfer enhancement on food drying. *Food Bioprod Process.* 2007;85(C3):247-254.
  19. Norton T, Sun DW. Computational fluid dynamics (CFD) – an effective and efficient design and analysis tool for the food industry: A review. *Trends Food Sci Technol.* 2006;17(11):600-620.
  20. Hodges RJ, Buzby JC, Bennett B. Postharvest losses and waste in developed and less developed countries: opportunities to improve resource use. *J Agric Sci.* 2011;149(S1):37-45.
  21. Kumar D, Kalita P. Reducing postharvest losses during storage of grain crops to strengthen food security in developing countries. *Foods.* 2017;6(1):8.
  22. Lee EA. Cyber physical systems: Design challenges. In: 2008 11th IEEE International Symposium on Object and Component-Oriented Real-Time Distributed Computing. IEEE; 2008. p. 363-369.
  23. Rajkumar RR, Lee I, Sha L, Stankovic J. Cyber-physical systems: The next computing revolution. In: Design Automation Conference. IEEE; 2010. p. 731-736.
  24. Khaitan SK, McCalley JD. Design techniques and applications of cyberphysical systems: A survey. *IEEE Syst J.* 2015;9(2):350-365.
  25. Serpanos D, Wolf M. *Internet-of-Things (IoT) Systems: Architectures, Algorithms, Methodologies.* Cham: Springer; 2018.
  26. Shi J, Wan J, Yan H, Suo H. A survey of cyber-physical systems. In: 2011 International Conference on Wireless Communications and Signal Processing. IEEE; 2011. p. 1-6.
  27. Hu L, Xie N, Kuang Z, Zhao K. Review of cyber-physical system architecture. In: 2012 IEEE 15th International Symposium on Object/Component/Service-Oriented Real-Time Distributed Computing Workshops. IEEE; 2012. p. 25-30.
  28. Baheti R, Gill H. Cyber-physical systems. *Impact Control Technol.* 2011;12(1):161-166.
  29. Verdouw C, Wolfert J, Beulens AJ, Rialland A. Virtualization of food supply chains with the internet of things. *J Food Eng.* 2016;176:128-136.
  30. Tzounis A, Katsoulas N, Bartzanas T, Kittas C. Internet of Things in agriculture, recent advances and future challenges. *Biosyst Eng.* 2017;164:31-48.
  31. Manickavasagan A, Jayas DS, White NDG. Thermal imaging to detect infestation by *Cryptolestes ferrugineus* inside wheat kernels. *J Stored Prod Res.* 2008;44(2):186-192.
  32. Nelson SO. *Dielectric properties of agricultural materials and their applications.* Amsterdam: Elsevier; 2015.
  33. Trabelsi S, Nelson SO. Microwave sensing of grain moisture content. *IEEE Sens J.* 2016;16(11):4338-4347.
  34. Wang N, Zhang N, Wang M. Wireless sensors in agriculture and food industry—Recent development and future perspective. *Comput Electron Agric.* 2006;50(1):1-14.
  35. Khatchaturian OA, Binelo MO. Simulation of three-dimensional airflow in grain storage bins. *Biosyst Eng.* 2008;101(2):225-238.
  36. Srivastava AK, Goering CE, Rohrbach RP, Buckmaster DR. *Engineering Principles of Agricultural Machines.* 2nd ed. St. Joseph: American Society of Agricultural and Biological Engineers; 2006.
  37. Pecen R, Zhu J, Rendeln MF. Implementation of a programmable logic controller (PLC) for industrial automation. In: 2003 Annual Conference Proceedings of ASEE. ASEE; 2003. p. 8.936.1-8.936.7.
  38. Bolton W. *Programmable Logic Controllers.* 6th ed. Oxford: Newnes; 2015.