



Artificial Intelligence-Driven Predictive Modeling and Formulation Optimization of Customized Bio-Pesticides Leveraging Multi-Source Field Data Analytics for Precision Pest Management in Sustainable Agricultural Systems

Dr. Anjali Verma

ICAR-Indian Agricultural Research Institute (IARI), Division of Entomology, New Delhi 110012, India

* Corresponding Author: **Dr. Anjali Verma**

Article Info

P-ISSN: 3051-3421

E-ISSN: 3051-343X

Volume: 03

Issue: 01

Received: 05-06-2022

Accepted: 06-07-2022

Published: 08-08-2022

Page No: 41-45

Abstract

Modern agriculture faces significant challenges in pest management, including pesticide resistance, environmental contamination, and the inefficacy of broad-spectrum chemicals against dynamic pest populations. These limitations necessitate a paradigm shift towards sustainable, precise, and adaptive solutions. This article explores the integration of artificial intelligence (AI) and machine learning (ML) with field-data analytics for the formulation and optimization of custom bio-pesticides. The primary aim is to detail a systemic framework where AI algorithms utilize real-time and historical field data—including pest surveillance imagery, meteorological parameters, soil biomarkers, and crop phenology—to inform the development of tailored bio-pesticidal formulations. Key approaches involve supervised learning models for pest risk prediction, reinforcement learning for dynamic dosage optimization, and clustering algorithms for matching bio-pesticide profiles to specific pest biotypes and agro-ecological conditions. Major applications include AI-prescribed, site-specific application strategies that enhance efficacy while minimizing off-target effects, thereby aligning crop protection with ecological sustainability. The conclusion underscores that this synergistic approach facilitates a closed-loop system of monitoring, prediction, and intervention, ultimately reducing synthetic chemical reliance, preserving biodiversity, and promoting resilient agricultural ecosystems. The convergence of agricultural biotechnology and data science heralds a new era of precision pest management that is both effective and environmentally conscientious.

Keywords: Artificial Intelligence; Machine Learning; Bio-Pesticide Formulation; Precision Agriculture; Pest Management; Sustainable Crop Protection

Introduction

Pest Management Challenges and Limitations of Conventional Pesticides

Global food security is persistently threatened by pest infestations, which are estimated to cause annual crop losses of 20-40%^[1]. Conventional synthetic pesticides, while historically effective, present escalating challenges including the rapid evolution of pest resistance, detrimental effects on non-target organisms (including pollinators and natural predators), soil and water contamination, and residue concerns^[2, 3]. Furthermore, their blanket application is economically inefficient and ecologically unsustainable, failing to account for the spatial and temporal heterogeneity of pest pressures within fields.

Need for Custom Bio-Pesticides and Field-Data-Driven Approaches

Bio-pesticides, derived from natural materials like microbes, plant extracts, and semiochemicals, offer a targeted and biodegradable alternative^[4]. However, their efficacy can be inconsistent, influenced by environmental factors, pest life stages, and formulation stability^[5].

The concept of *custom* bio-pesticides-formulations optimized for specific pest complexes, crop stages, and local environmental conditions—addresses this variability. The realization of this concept is contingent upon robust data analytics. The proliferation of in-field sensors, drones, and satellite imagery generates vast datasets on pest presence, crop health, and microclimates [6]. Leveraging this data for decision-making necessitates advanced computational approaches capable of translating complex, multivariate field observations into actionable formulation and application insights.

Scope of the Article

This article provides a technical examination of AI and ML methodologies specifically applied to the lifecycle of custom bio-pesticides: from predictive pest modeling and active ingredient selection to dosage optimization and efficacy validation. It outlines a data-driven framework for precision pest management, focusing strictly on the integration of field data analytics with bio-pesticide science. The discussion excludes pharmaceutical analogies, nanotechnologies unless directly relevant to delivery of biological actives, and unrelated engineering domains, maintaining a focused perspective on sustainable agricultural innovation.

AI Techniques for Bio-Pesticide Formulation

Machine Learning and Predictive Modeling

AI serves as the core analytical engine for transforming raw field data into predictive intelligence. Supervised learning algorithms, such as Random Forests, Gradient Boosting Machines (GBM), and Support Vector Machines (SVM), are trained on historical data where pest outbreak events are labeled [7, 8]. These models learn complex, non-linear relationships between predictor variables (e.g., temperature, humidity, canopy cover, previous pest counts) and the

probability of future pest exceedance thresholds. Deep learning, particularly Convolutional Neural Networks (CNNs), automates the analysis of visual data from traps and drone scouting, enabling real-time, species-specific pest identification and population density estimation [9]. Time-series forecasting models like Long Short-Term Memory (LSTM) networks can predict pest population dynamics, providing early warning systems that trigger pre-emptive formulation protocols.

Data Preprocessing and Feature Selection

The efficacy of ML models is predicated on data quality. Raw field data is often noisy, incomplete, and heterogeneous. Data preprocessing pipelines involve cleaning, normalization, and fusion of multi-source data (e.g., aligning spectral indices from satellites with point measurements from soil sensors) [10]. Feature selection techniques, including recursive feature elimination and principal component analysis, are critical for identifying the most informative variables driving pest ecology, thereby reducing dimensionality and improving model generalizability and computational efficiency [11]. This step ensures that formulation decisions are based on the most relevant agro-climatic and biological signals.

Integration with Field Monitoring Systems

The AI framework operates within a closed-loop cyber-physical system. IoT-based monitoring networks provide continuous data streams [12]. AI models process this data in near-real-time, and the outputs—predictive risk maps and pest profiles—are fed into a decision-support system. This system interfaces with databases containing bio-pesticide efficacy profiles, creating a dynamic link between the diagnosed field condition and the recommended biological intervention strategy. This integration is conceptually illustrated in Figure 1.

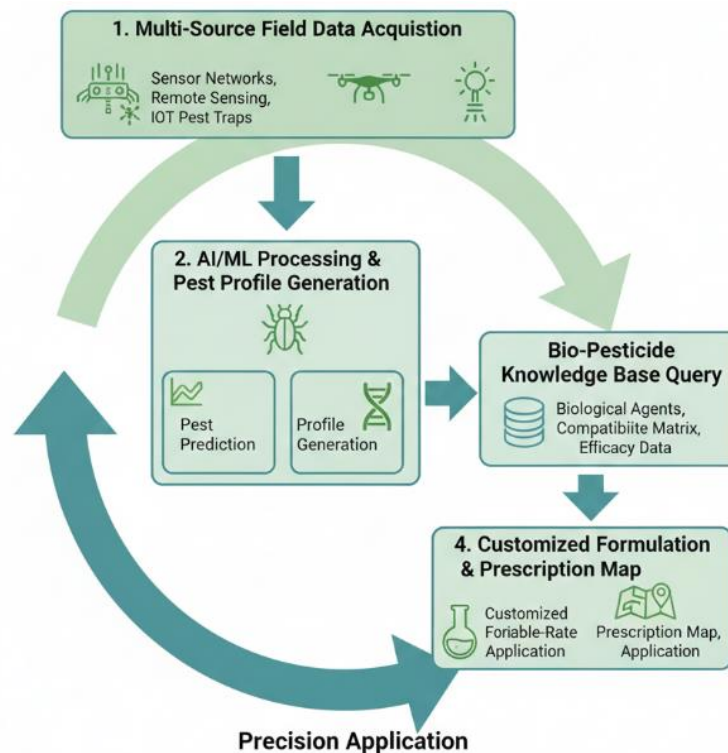


Fig 1: Conceptual framework of AI-driven bio-pesticide formulation using field data

Formulation and Optimization Strategies

Active Ingredient Selection and Dosage Optimization

Upon identification of a target pest and its risk level, AI models assist in selecting and optimizing the bio-pesticide formulation. Knowledge graphs and recommendation systems can map pest species to the most effective known microbial strains (e.g., *Bacillus thuringiensis* subspecies) or botanical compounds based on curated biological interaction databases [13]. Dosage optimization is framed as a reinforcement learning problem, where an AI agent learns an optimal policy for application rates by simulating outcomes (pest mortality, cost, environmental impact) based on continuous feedback from field sensors post-application [14]. This allows for adaptive, minimal-effective-dose strategies that maintain efficacy while conserving inputs.

Tailoring Bio-Pesticides to Pest Profiles and Environmental Conditions

Customization extends beyond the active ingredient. AI models can predict the impact of abiotic factors (UV radiation, pH, rainfall) on the viability and persistence of bio-pesticidal agents. This informs the optimization of adjuvant mixtures and formulation types (e.g., wettable powders, emulsifiable concentrates) to enhance shelf-life, rainfastness, and canopy penetration for the specific forecasted application window [15]. Clustering algorithms can classify field zones

into distinct "pest management units" based on similar risk factors and microenvironments, enabling spatially variable applications of differently tailored bio-pesticide mixes [16].

Model Validation and Efficacy Assessment

AI-driven recommendations require rigorous validation. This involves split-field trials where AI-prescribed formulations are compared against standard practices. Key performance indicators include pest mortality rate, crop damage index, yield, and non-target impact assessments. The results from these trials are fed back into the ML training datasets, creating a continuous learning cycle that refines the predictive and prescriptive accuracy of the models over time [17]. This iterative validation is crucial for farmer trust and adoption.

Applications in Precision Pest Management Field Deployment and Monitoring

The practical deployment involves variable-rate application technology (sprayers, drones) guided by AI-generated prescription maps. These maps define the "what, where, when, and how much" for bio-pesticide application [18]. Post-application, the same monitoring infrastructure tracks treatment efficacy, measuring changes in pest populations and crop vitality. This workflow, from data acquisition to action and assessment, is summarized in Figure 2.

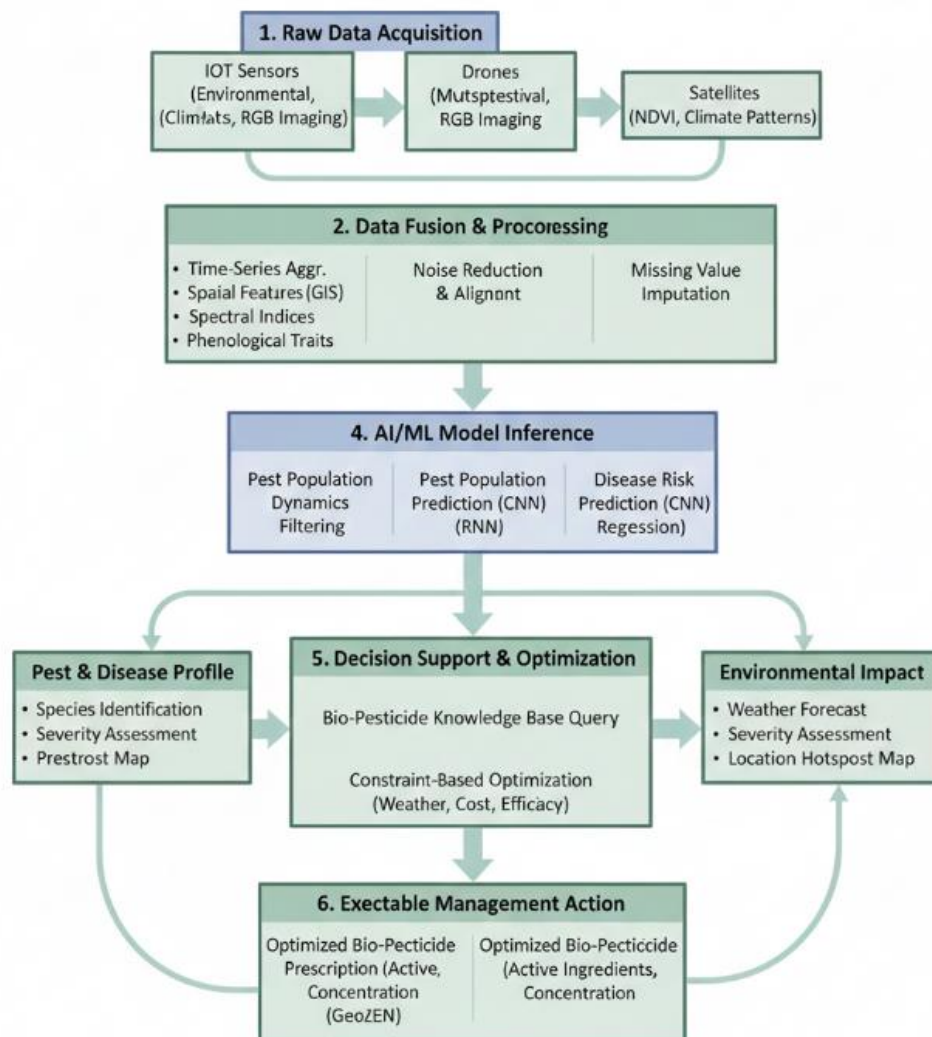


Fig 2: Workflow of data acquisition, preprocessing, and AI-based decision-making for pest management

Reduction of Chemical Inputs and Environmental Impact

By enabling precise targeting and minimizing prophylactic blanket sprays, AI-driven custom bio-pesticide application significantly reduces the total volume of active ingredients released into the agro-ecosystem [19]. This precision diminishes runoff, preserves soil microbiome health, and safeguards beneficial arthropods, thereby enhancing biological control and overall ecosystem services. The reduced ecological footprint is a cornerstone of the sustainability claim.

Crop Protection and Yield Improvement

The ultimate agronomic metric is yield protection and improvement. Studies indicate that precision pest management strategies, by mitigating loss at critical crop stages, can stabilize and often increase yield compared to calendar-based spraying, while simultaneously lowering input costs [20]. The use of effective bio-pesticides also helps manage resistance development, prolonging the utility of both biological and chemical tools in integrated pest management (IPM) portfolios.

Challenges and Future Perspectives

Data Quality, Model Scalability, and Adoption Barriers

Significant challenges remain. The development of robust AI models requires large, high-quality, and context-specific labeled datasets, which are often scarce in agriculture [21]. Model scalability across diverse geographies, crops, and pest species is non-trivial. Furthermore, adoption faces barriers including high initial technology costs, the need for digital literacy among farmers, and regulatory pathways for dynamically optimized bio-formulations [22].

Emerging Trends in AI-Assisted Agricultural Biotechnology

Future directions are promising. The integration of AI with genomics is facilitating the discovery of novel bio-pesticidal compounds through the analysis of microbial and plant genomes [23]. Explainable AI (XAI) methods are being developed to make model decisions interpretable to agronomists, increasing trust [24]. Furthermore, federated learning approaches allow for model improvement across farms without sharing raw proprietary data, addressing privacy concerns while enhancing collective intelligence [25].

Table 1: Types of bio-pesticides, active ingredients, and target pests

Bio-pesticide Class	Active Ingredient (Examples)	Source	Primary Target Pest Groups
Microbial Bio-pesticides	<i>Bacillus thuringiensis</i> (Bt)	Bacteria	Lepidoptera (caterpillars), Coleoptera (beetles), Diptera (mosquito larvae)
	<i>Beauveria bassiana</i>	Fungus	Aphids, whiteflies, thrips, Coleoptera
	<i>Metarhizium anisopliae</i>	Fungus	Termites, locusts, soil-dwelling insects
	Nuclear Polyhedrosis Virus (NPV)	Virus	Lepidoptera larvae (e.g., <i>Helicoverpa</i> , <i>Spodoptera</i>)
Plant-Incorporated Protectants (PIPs)	Bt Cry proteins	Genetically modified plants	Lepidoptera, Coleoptera
Biochemical Bio-pesticides	Azadirachtin (Neem extract)	Plant-derived	Aphids, mites, whiteflies, Lepidoptera
	Pheromones	Insect-produced compounds	Moths, beetles (mating disruption)
	Insect growth regulators (IGRs)	Natural or synthetic analogs	Immature stages of insects
Botanical Bio-pesticides	Pyrethrins	Chrysanthemum flowers	Mosquitoes, flies, beetles
	Essential oils (e.g., eucalyptus, clove)	Plants	Aphids, mites, stored-product pests

Table 2: AI and machine learning algorithms used for predictive pest modeling and formulation optimization

Algorithm Category	Specific Algorithms	Data Type Used	Primary Application in Bio-pesticide Formulation Pipeline
Supervised Learning	Random Forest (RF)	Weather data, pest incidence records	Pest risk forecasting, outbreak prediction
	Support Vector Machine (SVM)	Environmental & crop data	Pest population classification
	Artificial Neural Networks (ANN)	Multi-variable time-series data	Pest dynamics modeling
Unsupervised Learning	Convolutional Neural Networks (CNN)	Image data (field, leaf, insect images)	Image-based pest identification and damage assessment
	K-Means Clustering	Spatial & soil data	Field zoning, pest hotspot identification
	Hierarchical Clustering	Multivariate environmental data	Similarity analysis of pest-crop systems
	Principal Component Analysis (PCA)	High-dimensional datasets	Feature reduction for formulation optimization
Reinforcement Learning	Q-Learning	Sequential field feedback data	Dosage optimization of bio-pesticides
	Deep Q-Networks (DQN)	Sensor + action-reward data	Adaptive pest management strategies
Deep Learning	Recurrent Neural Networks (RNN)	Time-series pest population data	Seasonal pest forecasting
	Long Short-Term Memory (LSTM)	Climate and pest trend data	Long-term outbreak prediction
Hybrid / Ensemble Models	RF + CNN	Tabular + image data	Integrated pest monitoring systems
	ML + Optimization algorithms	Experimental formulation data	Bio-pesticide formulation stability and efficacy optimization

Conclusion

The integration of artificial intelligence with field data analytics presents a transformative pathway for advancing bio-pesticide technology and precision pest management. By enabling the formulation and optimization of customized biological solutions, this approach moves beyond one-size-fits-all strategies to dynamic, site-specific interventions. The resultant system enhances the efficacy and reliability of bio-pesticides, reduces dependency on synthetic chemicals, and minimizes environmental impact. While challenges in data infrastructure, model generalization, and adoption persist, the

continued convergence of data science, sensor technology, and agricultural biology holds immense potential for building more productive, resilient, and sustainable agricultural systems. The future of crop protection lies in intelligent, data-driven stewardship of both crops and the ecosystems they inhabit.

References

- Oerke EC. Crop losses to pests. *Journal of Agricultural Science*. 2006;144(1):31–43.
- Carvalho FP. Pesticides, environment, and food safety.

- Food and Energy Security. 2017;6(2):48–60.
3. Goulson D, Nicholls E, Botías C, Rotheray EL. Bee declines driven by combined stress from parasites, pesticides, and lack of flowers. *Science*. 2015;347(6229):1255957.
 4. Kumar S, Singh A. Biopesticides: present status and the future prospects. *Journal of Fertilizers and Pesticides*. 2015;6(2):1000e129.
 5. Glare T, Caradus J, Gelernter W, et al. Have biopesticides come of age? *Trends in Biotechnology*. 2012;30(5):250–258.
 6. Liakos KG, Busato P, Moshou D, Pearson S, Bochtis D. Machine learning in agriculture: A review. *Sensors*. 2018;18(8):2674.
 7. Buja I, Sabella E, Monteduro AG, et al. Advances in plant disease detection and monitoring: from traditional assays to in-field diagnostics. *Sensors*. 2021;21(6):2129.
 8. Shah FS, Li J, Li J, et al. Pest incidence prediction based on machine learning algorithms. *Computers and Electronics in Agriculture*. 2023;204:107566.
 9. Thenmozhi K, Reddy US. Crop pest classification based on deep convolutional neural network and transfer learning. *Computers and Electronics in Agriculture*. 2019;164:104906.
 10. Kamir E, Waldner F, Hochman Z. Estimating wheat yields in Australia using climate records, satellite image time series and machine learning methods. *ISPRS Journal of Photogrammetry and Remote Sensing*. 2020;160:124–135.
 11. Chandrashekar G, Sahin F. A survey on feature selection methods. *Computers and Electrical Engineering*. 2014;40(1):16–28.
 12. Tzounis A, Katsoulas N, Bartzanas T, Kittas C. Internet of Things in agriculture: recent advances and future challenges. *Biosystems Engineering*. 2017;164:31–48.
 13. Ji S, Pan S, Cambria E, Marttinen P, Yu PS. A survey on knowledge graphs: representation, acquisition, and applications. *IEEE Transactions on Neural Networks and Learning Systems*. 2022;33(2):494–514.
 14. Sutton RS, Barto AG. Reinforcement learning: an introduction. 2nd ed. Cambridge (MA): MIT Press; 2018.
 15. Knowles A. Recent developments of safer formulations of agrochemicals. *The Environmentalist*. 2008;28(1):35–44.
 16. Mulla DJ. Twenty-five years of remote sensing in precision agriculture: key advances and remaining knowledge gaps. *Biosystems Engineering*. 2013;114(4):358–371.
 17. Wolfert S, Ge L, Verdouw C, Bogaardt MJ. Big data in smart farming: a review. *Agricultural Systems*. 2017;153:69–80.
 18. Zhang C, Kovacs JM. The application of small unmanned aerial systems for precision agriculture: a review. *Precision Agriculture*. 2012;13(6):693–712.
 19. Bongiovanni R, Lowenberg-DeBoer J. Precision agriculture and sustainability. *Precision Agriculture*. 2004;5(4):359–387.
 20. Gebbers R, Adamchuk VI. Precision agriculture and food security. *Science*. 2010;327(5967):828–831.
 21. van Klompenburg T, Kassahun A, Catal C. Crop yield prediction using machine learning: a systematic literature review. *Computers and Electronics in Agriculture*. 2020;177:105709.
 22. Shepherd M, Turner JA, Small B, Wheeler D. Priorities for science to overcome hurdles thwarting the full promise of the digital agriculture revolution. *Journal of the Science of Food and Agriculture*. 2020;100(14):5083–5092.
 23. Tripathi S, Chandra S, Tewari S, et al. Artificial intelligence and machine learning based approaches for the detection of novel bioactive compounds in natural resources. *Frontiers in Plant Science*. 2022;13:1025971.
 24. Arrieta AB, Díaz-Rodríguez N, Del Ser J, et al. Explainable Artificial Intelligence (XAI): concepts, taxonomies, opportunities and challenges toward responsible AI. *Information Fusion*. 2020;58:82–115.
 25. Kairouz P, McMahan HB, Avent B, et al. Advances and open problems in federated learning. *Foundations and Trends in Machine Learning*. 2021;14(1–2):1–210.